

HI-MACS® for the State Coffee Co. inspired by New York in the 1930s



Lab4 Architects chose **HI-MACS®** for the latest espresso bar in the Greek coffee bar chain **State Coffee Co.**, which has opened in Agrida, a town on the Gulf of Pagasai in eastern Greece.

In both design and furniture selection, the new State Coffee Co. is inspired by the classic New York espresso bars of the 1930s, with elements reminiscent of the naval industrial style found in old cafés in the port of Manhattan during the early 20th century. These details combine harmoniously with 'Mediterranean' features, such as the hexagonal cement tiles and the characteristic Italian bar area. In homage to the different styles, images of the fascinating New York of that era and of Italian bartenders at work hang on the walls.



The espresso bar overlooks the sea, and its floorspace of 90 m² comprises three zones: an area where coffee is prepared, a serving area, and a semi-covered terrace with tables where customers can enjoy their coffee.

Clearly visible through the large storefront windows, the bar itself sits in the middle of the coffee shop and has a large rectangular counter featuring a durable top in **HI-MACS®** with an **Arctic Granite G034** finish. The latest generation acrylic stone has also been used for the area that houses the display cabinet and for the finishing around the column separating the counter from the entrance leading into the drinks preparation area.



The architects chose **HI-MACS®** Solid Surface for its excellent hygienic properties, its extreme ease of cleaning and its high resistance to stains, dirt and chemicals. In addition, it is remarkably resistant to scratches and to the type of daily wear

commonly encountered in areas of intensive use and high customer throughput such as a café.

The white finish and granite texture of the **HI-MACS®** is enhanced by the warm hue and grain of the highly figured walnut used for the cabinets, compartments and shelves that make up the bar area. This contrast is further highlighted by the brilliant aquamarine finish used as the background for the company logo and the shelving recessed into the front face of the counter.



With its mixture of highly diverse yet complementary styles, the new State Coffee Co. offers a tantalising gateway into authentic coffee culture and distant eras.

ABOUT THE PROJECT

Location: Agria, Greece

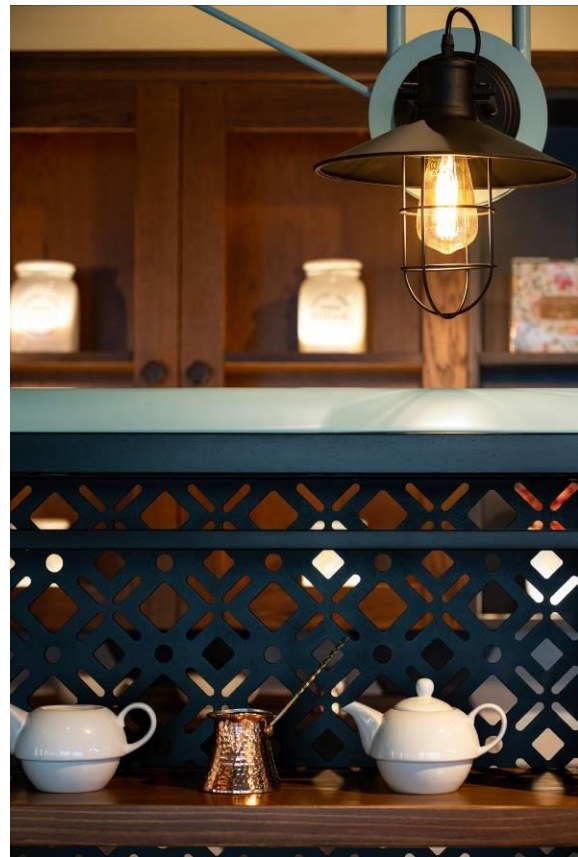
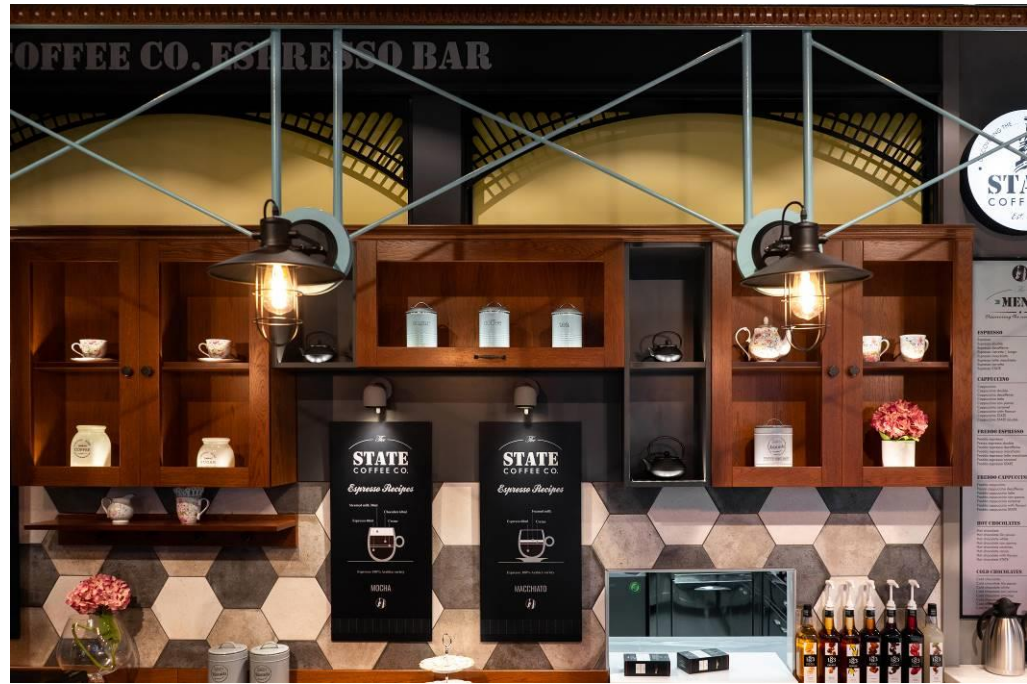
Project: State Coffee Co. Espresso Bar

Design: Lab4 architects – www.lab4architects.com

Material: HI-MACS® Arctic Granite G034

Photos: Kostas Kroustalis

HI-MACS®. Because Quality Wins



HI-MACS® by LG Hausys

www.himacs.eu

HI-MACS® is a solid surface material that can be moulded into any shape. It is widely used for architectural and interior applications, such as sculptural and high performance wall-cladding or kitchen, bathroom and furniture surfaces, in commercial, residential and public space projects. It is composed of minerals, acrylic and natural pigments that come together to provide a smooth, non-porous and visually seamless surface which meets the highest standards for quality, aesthetics, fabrication, functionality and hygiene – offering manifold advantages over conventional materials.

HI-MACS® provides limitless possibilities for surfacing solutions and inspires creative minds from all over the world. **Zaha Hadid, Jean Nouvel, Rafael Moneo, Karim Rashid, Marcel Wanders** and **David Chipperfield**, among others, have completed fabulous projects using HI-MACS®.

At the forefront of innovation as always, LG Hausys recently introduced two new products. First **HI-MACS® Ultra-Thermoforming**, an innovative formula that pushes the boundaries of solid surface shaping to a whole new level, with 30% more thermoplastic capabilities - the biggest innovation for the Solid Surface history since its inception in 1967. Now, **HI-MACS® Intense Ultra**, combining the characteristics from two disparate worlds: **Intense Colour Technology** and **Ultra-Thermoforming**.

LG Hausys' HI-MACS® uses a simple heating process to give three-dimensional thermoplastic forming capabilities, allows visually seamless designs, offers a virtually limitless range of colours and – for some shades - exhibits a special translucency when exposed to light. Although HI-MACS® is almost as robust as stone, it can be worked in a similar way as wood: it can be sawn, routed, drilled or sanded.

HI-MACS® is manufactured using a new generation technology, the **thermal cure**. The temperature reached during the manufacturing process sets HI-MACS® apart from other solid surfaces and creates a denser, even more homogeneous, sturdy, durable surface – with a better resistance and superior thermoforming performance.

HI-MACS® does not absorb humidity, is highly resistant to stains, and is easy to clean, maintain and repair.

Countless internationally recognized certificates attest to the quality of HI-MACS® in terms of ecological commitment, hygiene and fire resistance – being the first Solid Surface in the market to receive the official **European Technical Approval (ETA) for façades** – for Alpine White S728 colour. Furthermore, HI-MACS® has obtained the French **QB certification** and **CSTB ATec “Avis Technique”** for facade applications.

HI-MACS® offers a 15-year warranty for products fabricated by a Quality Club Member.



HI-MACS®. Because Quality Wins.

For more information and to stay connected, visit our [website](#) and our [newsroom](#).

Let's connect!



* **HI-MACS®** is designed and produced by **LG HAUSYS**, a world leader in the technology sector belonging to LG Group, and distributed by **LG HAUSYS EUROPE** based in Frankfurt (Germany).

HI-MACS® Media contact for Europe:

Mariana Fredes – LG Hausys Europe GmbH - Ph. +41 (0) 79 693 46 99 – mfredes@lghausys.com

High resolution images available: www.himacs.eu/newsroom